

THE ALPHABOND REVIEW

REVOLUTIONARY PRODUCTS FOR YOUR DENTAL NEEDS

www.alphabond.com.au

ISSUE 26

EQUIPMENT REVIEW



WHERE THE AIR IS RAREFIED

Renfert offers a wide range of extraction technology to suit your laboratory needs. Available as single-workstation, two-workstation or four-workstation extractors and also for use with a CAD/CAM system. All versions are compact and slimline. Offering bag or bagless filter technology.

As the name suggests, the modern range is extremely quiet, easily calibrated, strong and intuitive. Offering running times of >1000 operating hours, if the motor does need replacing, you can do it in a matter of minutes. The EC motor technology of the Silent V4 has an even longer service life of >5000 operating hours. Find the model you need and work easier and healthier with the Silent range.

ZIRKONZAHN: M1 WET HEAVY METAL MILLING UNIT

The M1 provides your lab with the technology to process zirconia, PMMA, wax, sinter metal, chrome-cobalt, as well as titanium, Raw-Abutments®, Bridge-Rods, glass ceramics and composite, depending on equipment. With 5+1 axes simultaneous milling and orbit technology, the unit has 5-fold tool magazine with 6mm CAD/CAM milling burs for more stability. With the wet processing functionality, airbrush and laser writing, the M1 is also equipped with blocking air. An integrated scanner with scanning and milling software, together with design software, M1 STL files may be processed in or out of the scanning software. (Order code: ZZSYAB0310)



COME ON BABY, LIGHTCURE MY FIRE

Yeti's UVA light curing unit is big enough to take up to 4 models. With an emitter zone of 350 nm, you can change the tubes to cure composites and block out material too.

(Ref: Y494-9000)



LIGHT UP YOUR LIFE

The Smile Lite MDP has made a giant leap forward in smartphone photography. Equipped with three groups of LEDs that light up individually, you have greater control over the amount of illumination. Requiring no calibration or App-store purchase, and fitted with an adjustable adaptor, for any smartphone with a width of 55-85mm. Optional polarising filter (6620) and diffusers (6610) can give you more professional results. (MDP - Ref: 6600)



ALPHABOND dental

www.alphabond.com.au Ph: (02) 9417 6660 E-mail: info@alphabond.com.au



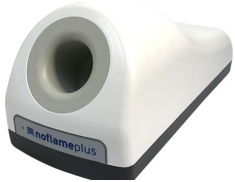
GET THE RIGHT CAST FOR YOUR SHOW

The Fornax T is a compact benchtop casting machine with an induction melting device and integrated power cooling. Possessing high-performance induction heating guarantees shorter melting cycles, minimises oxidation, thus facilitating subsequent finishing. The integrated power cooling provides for over 50 casts in a row, even with high ambient temperatures, with moulds made of phosphate-bonded investment materials. A casting temperature of up to 1550°C makes it ideal for all available dental alloys (except titanium). The user-friendly operating panel provides information on all parameters and gives quick and easy access to all major functions. Dimensions: 460mm (H) x 710mm (W) x 630mm (D), and weighing in at 80kg. (REF: BG26426)



NO FLAME TREES FOR THIS WEARY DRIVER

Noflame Plus - the "electric Bunsen burner". Simply place your waxing-up instrument in and it is heated in the coil opening by induction in a matter of seconds. With minimal energy consumption, the unit excludes carbon collecting on instruments or in the sculpting wax. It turns on immediately with no adjusting, and doesn't produce any emissions. Say goodbye to any fire hazards and save on your energy costs. (Ref: 116250)



THE BORN ULTIMATUM



The NSK Ultimate XL series offers a choice of four control units to suit your requirements. Units available in bench top, bench top tower, knee control, and foot control. With speeds of 1,000-50,000min, its user-friendly, and easily operated. NSK's microcomputer maintains smooth starting and stopping ensuring excellence in overall operability. (Ref: NSK-Y141_)

And foot control. With speeds of 1,000-50,000min, its user-friendly, and easily operated. NSK's microcomputer maintains smooth starting and stopping ensuring excellence in overall operability. (Ref: NSK-Y141_)

BORN IN THE USA

The Single Chambered Vacuum Former is an economical answer to fabricate thermo-plastic appliances. The all-aluminum construction eliminates rusting and the heating element is symmetrically engineered for uniform heat distribution. The hexagonal post keeps the frame from rotating or sliding. This vacuum former uses 12.7 x 12.7 cm blanks. (Ref: 9594320)



DO IT YOUR WAY WITH SINTRA!

The Sintra Plus sinter furnace is totally programmable and fully adaptable to all Zirconia materials. Two unique features: Degassing which keeps the muffle clean of impurities, and Active Cooling with a negative temp. ramp. (Ref: GPF400A)

(Ref: GPF400A)



THE ECO WARRIOR

The Renfert Basic ECO microblaster with up to two tanks offers precision at a low price in compact dimensions. Its mixing chamber and specialised nozzles provide:



perfectly uniform abrasive flow, power and jet pattern, maximum field of vision and improved efficiency, reducing abrasive costs by 80%. Includes 1 x 25-70 um tank and 1 x 70-250 um tank. (Ref: R2949-2025)

STAR STEAM WARS

The compact REITEL STAR steam cleaner (3Ltr) has a high pressure of 4 bars and temperature of 150°C. It provides excellent cleaning of wax residue on models, and dirt in inaccessible points of filigree work or soldering remains. Grease, sticky wax, pickling agents, solvents and plaster residue are gently removed without any chemical additives. (Ref: REIT14401)



ALPHABOND dental

www.alphabond.com.au Ph: (02) 9417 6660 E-mail: info@alphabond.com.au

