

Aidite Coloring Liquid Instruction

【STEP ONE: Materials preparation】

Tools Preparation: No.2 brush, Plastic containers, Plastic tweezers, Glass plate, Medical gloves, Paper towels.

Products Preparation: Aidite Incisal Liquid, Aidite Coloring Liquid Indicators, Aidite Coloring Liquid.

【STEP TWO: Cleaning】

Using brush or porcelain brush thoroughly clean up the powder on the surface and inner of restorations.



Attentions!

If cleaning is not thorough, may cause the following effects:

- a. After sintering, the sintered powder will adhere to the surface and inner of the restorations, form the white dots, which can affect appearance and position of the restorations.
- b. During immersion, the residual powder will pollute coloring liquid which will have an influence on the accuracy of the color.

【STEP THREE: Coloring before Sintering】



Incisal Liquid (T1)

Function: Brushing on incisal 1/3, incisal ridge to achieve natural gradient effect.



Coloring Liquid Indicators

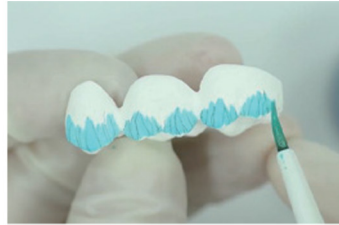
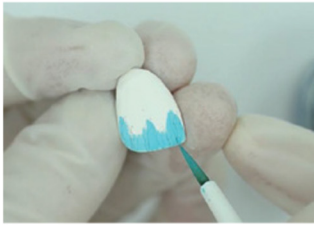
Function: Visualize the Incisal Liquid as an indicator, and totally burned out after sintering without any influence on the final color effect.

Brushing the incisal liquid (T1) first and then using immersion method.

Mixing Incisal Liquid (T1) and Coloring Liquid Indicators in proportion. (Mixing ratio: 25ml incisal liquid (T1) + 1 drop Coloring Liquid Indicators)



Using No.2 porcelain pen to dip incisal liquid and brushing on incisal 1/3 area; The posterior teeth are brushed 2 times, and the anterior teeth are brushed 3 times (SHT-PW can be used as anterior teeth). And then triangular ridge for 1 time.



The method of painting the pontic with incisal liquid:

Follow the steps above to paint the incisal 1/3 area first. Then using No.2 porcelain pen to dip incisal liquid and uniformly brushing on pontics and then brushing the whole for 2 time.



Attentions!

- a. Don't brush too less, otherwise no effect on the incisal
- b. Don't brush too much, otherwise may cause whitish .
- c. After brushing, you can do immersion immediately.
- d. For small pontics, implanted or thick restorations only need to be painted once.



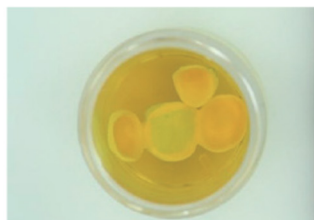
Coloring Liquid

Function: Make the restorations adhesive with undertone compared with the shade guide by using integral immersion method and achieve good transparency.



After brushing, you can do immersion immediately.

Gently shake the bottle and pour into a clean and dry plastic container, make sure that the dosage of the coloring liquid can completely cover the whole restorations.



Gently immerse the restoration occlusal surface down into the container with plastic tweezers for 1 min.



When finished, remove the restoration to a clean glass plate, and move a few places.



Using paper towels gently suck out the obvious liquid on the inner surface and grove area, at the same time, clean up the redundant dyeing liquid on the glass plate.



Attentions!

- a.All the tools must not be metal during coloring.
 - b.After coloring, prohibit wiping any part of the restorations with paper towels or contacting with strong absorbent material such as paper towels for a long time.
 - c.Clean the zirconium powder on the surface with brush before coloring. Make sure the restorations are dry and clean.
- Recommended wearing medical gloves.

[STEP FOUR: Drying]



Airing

- a.Airing method: After coloring, put the restorations occlusal surface up on clean and dry glass plate or sintering tray, airing. Make sure no redundant liquid on the surface.
- b.Time: Dry for more than 20mins, and dry for half arch crown bridge.



Attentions!

Ensure the environment is clean and no wind, avoid being blown by natural wind and air conditioner, or put a lid on the top.

Drying:

Sintering curve	Drying before normal sintering(>4h)		Drying before fast sintering(≤4h)
	Below 6 unites	Above 6 unites	Single crown and below 6 unites
Drying time	20min	20-60min	30 min
Drying tools	oven		
Drying temperature	70-120°C		150°C

[STEP FIVE: Sintering]



Put the restorations occlusal surface or lingual side down on the zirconium bead; Follow the special sintering curve of this zirconia product. For details, please refer to the Aidite zirconia block User Instruction.



Attentions!

- a.When facing the following situations, zirconium beads must be changed in time: seriously color change; incomplete or damage of shape; Dead color, without translucency.
- b.Check whether there is adhesion. If yes, separate zirconium beads to ensure the good liquidity.
- c.Qty: Completely cover the sagger bottom, 2-3 layers.
- d.When changing new beads, have the beads with waste sintered for 1-2 times, then sinter restorations.



Clean and Maintenance of Furnace

- a. Cleaning method: Clean up the impurities in the chamber, and then put abandoned zirconia leftover material into the furnace for air burning. Clean once a week.
- b. Check heating elements before sintering, if there is peeling on the element (silicon molybdenum rods) surface, put abandoned zirconia leftover material into the furnace for air burning.
- c. When not in use, the furnace should be closed, and guarantee the dry environment inside the furnace.
- d. Please keep the sintering equipment safely and clean, avoid using under dusty environment, otherwise, those will impact on the heating elements.



Attentions!

- a. Before coloring, make sure the dyeing liquid can be used within the expiration date. For opened coloring liquid, can be used for max two months. For unopened coloring liquid, if stored properly, can be normal used within 18 months.
- b. If the coloring liquid in the container is polluted or expired, please change in time, otherwise, will affect the result.
- c. Keep liquid sealed when not in use at a storage temperature: 5-25°C, don't return it into the original bottle to avoid damage to the original liquid.
- d. Prohibit sintering under humid conditions. Restorations must be fully dried before sintering.