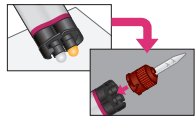


When to use G-GEM ONE ADHESIVE ENHANCING PRIMER (AEP) or G-Premio BOND? (ONLY for tooth/abutment: See opposite side for procedures.)

When to use G-Multi PRIMER? (ONLY for restoration)



Before placing the mixing tip, check the two openings of the syringe to ensure that the pastes are at same level or bleed a small amount of pastes to ensure even flow from the syringe.



Retentive preparation	
Substrate of restoration	AEP or G-Premio BOND
Metal, Zirconia, Ceramics	Optional
Hybrid Ceramics, Composite	Mandatory ✓

Non-retentive preparation	
Substrate of restoration	AEP or G-Premio BOND
Metal, Zirconia, Ceramics	Mandatory ✓
Hybrid Ceramics, Composite	Mandatory ✓



Substrate of restoration	G-Multi PRIMER
Metal, Zirconia	Optional*
Ceramics, Fiber Post, Hybrid Ceramics, Composite	Mandatory ✓

*G-GEM ONE cement contains MDP, so G-Multi PRIMER is optional for metal and zirconia.

CEMENTATION TECHNIQUE for metal, ceramic, fiber post and cast post & cores

When more adhesion is needed



1. Clean and rinse the post space, then thoroughly dry using paper points. **Do NOT use H₂O₂ and/or EDTA** to chemically clean the post space.



2. When more adhesion is needed, apply **G-GEM ONE ADHESIVE ENHANCING PRIMER**, wait 10 seconds, and dry with **MAXIMUM** air pressure until the primer solution does not come out of the root canal entrance anymore. Remove excess primer solution with paper points. **Do NOT use G-Premio BOND in this case.**



3. Prepare the post/core according to the manufacturer's instructions.



4. Extrude the material directly into the post space. Insert the post immediately into the post space **within 1 minute after cement application.**



5. Continue to maintain moderate pressure making sure the post remains in place and remove excess cement.



6. While maintaining moderate pressure, light cure all surfaces / margins.



7. Let the material set for 4 minutes.

Irradiation time	G-GEM ONE
High power LED (more than 1200 mW/cm ²)	10 seconds
Halogen / LED (700-1200 mW/cm ²)	20 seconds

THIS PRODUCT IS NOT AVAILABLE FOR PURCHASE BY THE GENERAL PUBLIC. ALWAYS READ AND FOLLOW THE DIRECTIONS FOR USE.

CEMENTATION TECHNIQUE for inlays, onlays, crowns, bridges and veneers

Tooth Preparation



1. Clean, rinse and thoroughly dry the prepared tooth.*

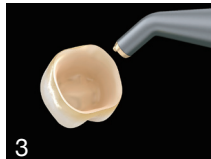
When more adhesion is needed

2A. Apply **G-CEM ONE ADHESIVE ENHANCING PRIMER**, wait 10 seconds, and dry with **MAXIMUM** air pressure for 5 seconds to prevent liquid pooling in the gingival sulcus**. **Light-cure is NOT needed.**

2B. After **shaking the bottle**, apply **G-Premio BOND**, wait 10 seconds, and dry with **MAXIMUM** air pressure for 5 seconds to prevent liquid pooling in the gingival sulcus** and **light-cure**. See the below table for the irradiation time.

* In case of veneer or onlay cementation, etch enamel with 35-40% phosphoric acid for 10-15 seconds and carefully rinse off.

Restoration Preparation



3. Prepare the restoration according to the manufacturer's instructions.



4. Place the mixing tip and extrude the material directly into the restoration.

Cement Application



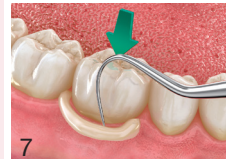
5. Seat immediately and maintain moderate pressure. Working time is 2 minutes 45 seconds at 23°C (which is reduced when **G-CEM ONE ADHESIVE ENHANCING PRIMER** is used).



6A. Tack cure by waving the light guide of a curing light over the excess cement **for 1 second** until it reaches a rubbery consistency.



6B. Keep moderate pressure until it reaches a solid rubbery consistency.



7. Remove excess cement while maintaining moderate pressure.



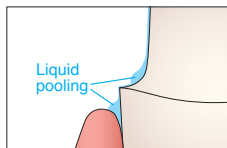
8A. While maintaining moderate pressure, light cure all surfaces /margins.



8B. Let the material set for 4 minutes in case restoration does not let the light to pass through.

Irradiation time	G-Premio BOND	G-CEM ONE
High power LED (more than 1200 mW/cm ²)	5 seconds	10 seconds
Halogen / LED (700-1200 mW/cm ²)	10 seconds	20 seconds

** Liquid pooling in the gingival sulcus



► Scan for more information



Consult instructions for use

GC Australasia Dental Pty Ltd
 1753 Botany Road Banksmeadow
 NSW 2019 Australia
 T: +61 2 9301 8200
 E: info.australasia@gc.dental
 www.gcaustralasia.com