

Qu-resin

Quick-setting, self-curing denture repair resin based on diacrylate for intraoral and extraoral (direct and indirect) use.

The perfect material when it comes to speed - regardless whether in practices or laboratories. Qu-resin rosa and Qu-resin dentin for standard processing in the laboratory and for direct use in situ. Qu-resin covers a wide indication range thanks to simple handling, quick setting and two colors (pink and dentin).

PERSPECTIVES



Laboratory



Dentist



Patient

FOR ALL CONCERNED

Laboratory

Compared to the conventional method using cold-curing resin and polymerization in the pressure pot, Qu-resin excels by reducing the processing time considerably. No pressure pot is required for Qu-resin since the self-curing resin sets quickly.

Dentist

Qu-resin for intraoral use. The dentist can perform chairside repair of the denture and reduce the amount of time considerably both for himself and the patient.

Patient

Qu-resin minimizes the waiting time for the patient and hence provides high comfort. Correction can be completed in a single appointment by using this denture repair resin.

Use – chairside



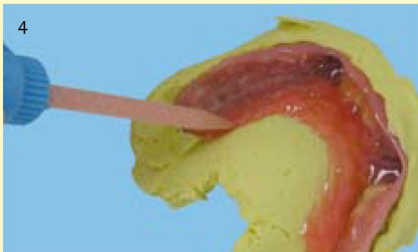
1 After the extraction, the upper telescopic bridge (palatally reduced) is „transformed“ into a temporary full denture.



2 Plate wax as spacer for the palate.



3 Alginate impression on the telescopic bridge and the spacer. Then the areas of the transition zones to the areas to be completed is conditioned with Qu-connector.



4 Injecting of Qu-resin. The secondary crowns of the extracted teeth are filled.



5 The palatal area is built up in the impression using Qu-resin.



6 The material must be applied quickly. Qu-resin that is still liquid is positioned with the impression in situ and shaped directly.



7 The impression is removed from the mouth after approx. 3 minutes and final polymerization is completed outside the mouth after approx. 5 minutes.



8 The telescopic bridge extended into a denture ...



9 ...is finished...



10 ...and can be immediately inserted.



1 Lower CoCr restoration is „transformed“ into a temporary full denture after extracting the abutment teeth.



2 Impression of the actual situation with alginate.



3 After the extraction of the teeth, the positions of the missing teeth in the impression are filled with Qu-resin.



4 The areas to be completed in the transition zones are conditioned with Qu-connector.



5 Missing pink-colored areas are filled directly in situ.



6 Material can be directly injected below small, non-supported areas in the mouth.



7 Denture completed with Qu-resin dentin and Qu-resin pink.



8 Completed temporary denture in situ.

Use – labside



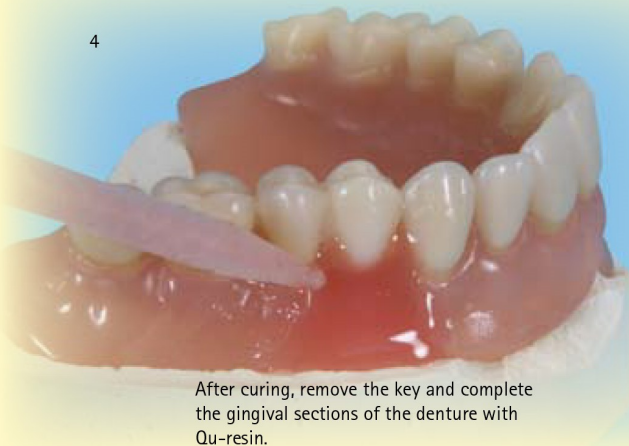
1
Tooth no. 24 is extracted and the partial denture is „transformed“ into a full denture.



2
A key is prepared to record the situation.



3
The areas to be completed are roughened, Qu-connector is applied and light-cured for 90 seconds. Then Qu-resin dentin is injected into the key; the key is replaced again and the tooth shape is completed from the oral direction.

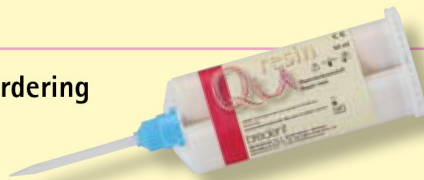


4

After curing, remove the key and complete the gingival sections of the denture with Qu-resin.

- available in 2 colors (dentin/pink)
- sets in 3 minutes
- for intra- and extraoral (direct and indirect use)
- self-curing resin in the cartridge, no pressure pot required
- connector for bonding with other resins; can be activated with all UV units
- excellent processing and polishing properties

Information on ordering



Qu-resin

is a quick-setting, self-curing denture repair resin in two colors (pink/dentin). It is suitable for intra- and extraoral use.



connector

Bonding agent for Qu-resin

Qu-resin is used to achieve perfect bonding between PMMA-based denture base materials and high impact PMMA composite materials (acrylic teeth).



Qu-resin dentin

Assortment
50 ml
REF 540 0116 2

Mixing cannulas, size 1, blue
included in the assortment

12 pieces
REF 320 0045 0

Qu-resin pink
Assortment
50 ml
REF 540 0116 1

Qu-connector
included in the assortment
10 ml
REF 540 0116 3

Accessories:

Dosing device
1 piece
REF 320 0044 0

