

**Nothing is impossible when you  
have the tools to succeed.**



## **MiYO® Liquid Ceramic Brushes**

### **The Right Tools Matter**

You wouldn't hit a golf ball off a tee with a putter, would you? -- Didn't think so. Just like a professional golfer, when creating any MiYO masterpiece in your laboratory, whether it is a single unit posterior or an all on four-hybrid implant restoration – the right tools are critical. Developed by the ceramists who pioneered the MiYO Liquid Ceramic System, the MiYO brush set is so much more than a brush set. The 6-piece set actually improves esthetics and decreases working time so you can get great results the first time, and every time.

*"I am amazed at how the MiYO brushes help me to apply and control MiYO."  
-Jason Scott*

### **Make Your Work Stand Out**

The MiYO Liquid Ceramic brush set is the latest in a long list of dental innovations pioneered by Jensen Dental. The first time you use any of the components, you will see a difference in your work. So, use the MiYO brushes and spatula and watch your end results get better. Overnight.

*"The MiYO brush system is the perfect complement to float color on top of color and achieving the texture of enamel that the MiYO system is known for."  
-Todd Ehrlich, DDS, FAGD*

### **Quality Matters**

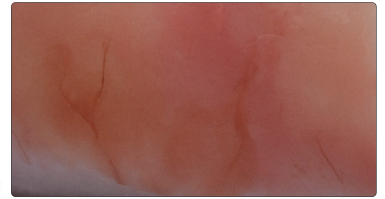
At Jensen, quality is an obsession. So much so that we painstakingly designed every component of the MiYO brush set to help you turn every restoration into a MiYO masterpiece. Our goal is to always build the most consistently perfect products possible. The benefit to you? A complete system of products that makes doing your job easier (and fun).

# Visibly Superior

A brush is a brush is a brush, right? Wrong! The six piece MiYO brush set were all specifically designed to use with MiYO Color & Structure materials. Now you can increase your esthetics and decrease your time at the bench like a pro.

## Brush 1:

MiYO Color Fine Detail Brush (Kolinsky); used to replicate every fine detail imaginable with MiYO Color quickly



## Brush 2:

MiYO Color Brush (Kolinsky); used to apply and float MiYO Color on top of Color seamlessly



## Brush 3:

MiYO Structure Brush (special blend of Kolinsky and Synthetic); used to apply MiYO Structure efficiently and consistently



## Brush 4:

MiYO Gingival Stippling Brush (Kolinsky); used to replicate the stippling effect seen in natural gingival with MiYO Pink Structure in seconds



## Brush 5:

MiYO Fan Brush; used to create surface texture with MiYO Teeth and Pink Structure with a few brush swipes



## Spatula:

MiYO Mixing Spatula; used to mix MiYO Color and Structure so you can get the best results consistently

